



Discovery Resources Opportunity (DRO)

May 2024

Discovery Resources Opportunity (DRO)

One

Two



Open Area Exploration

6

Discovery Resources Opportunity (DRO)



Discovery Resources Opportunity (DRO)

● DRO
□ Focus Area

DRO-6 JAMBU AYE UTARA
1 Field
163.2 BCFG & 3.4 MMSTB

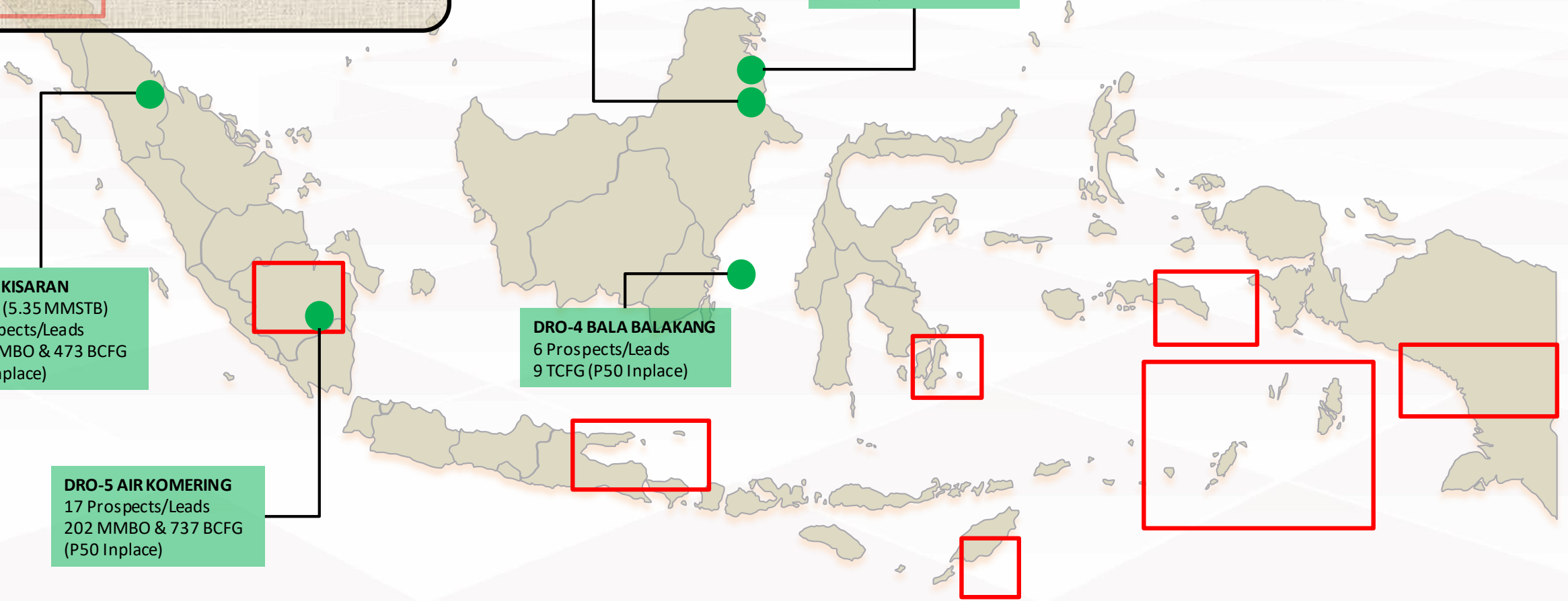
DRO-2 WEST SANGATTA
6 Prospects/Leads
652 MMBO (P50 Inplace)

DRO-3 BENGARA II
2 Prospects/Leads
204 MMBO & 188 BCFG
(P50 Inplace)

DRO-1 KISARAN
1 Field (5.35 MMSTB)
9 Prospects/Leads
890 MMBO & 473 BCFG
(P50 Inplace)

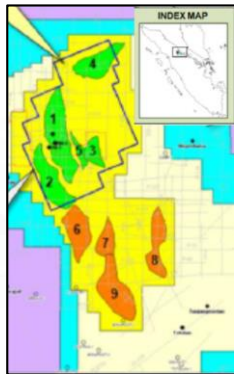
DRO-4 BALA BALAKANG
6 Prospects/Leads
9 TCFG (P50 Inplace)

DRO-5 AIR KOMERING
17 Prospects/Leads
202 MMBO & 737 BCFG
(P50 Inplace)



DRO-1 KISARAN

1. LOCATION

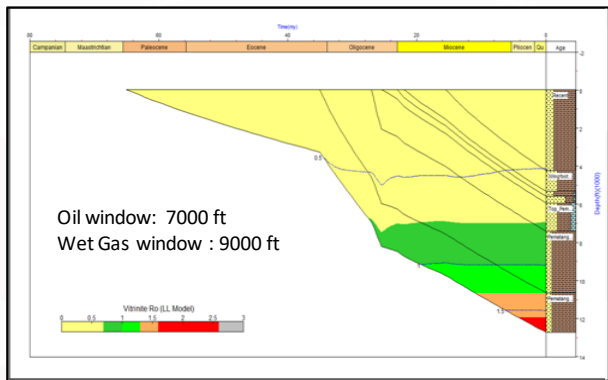


- DRO-1 is located in Onshore North Sumatra.
- DRO-1 area has 2 (two) good potential of hydrocarbon the Conventional that already POD, and the unconventional play.
- POD of Parit Minyak Approval : 13 May 2015, with Total Reserve : 5.35 MMSTB (end of contract) dan 5.996 MMSTB (economic limit)
- Total Resources for Conventional Play from 5 Prospects and 4 leads in area is **OOIP 890 MMBO/ OGIP 473 BSCF**.
- Total Resources for Unconventional Play in sweetspot area is **OOIP 7.3 BBOE**

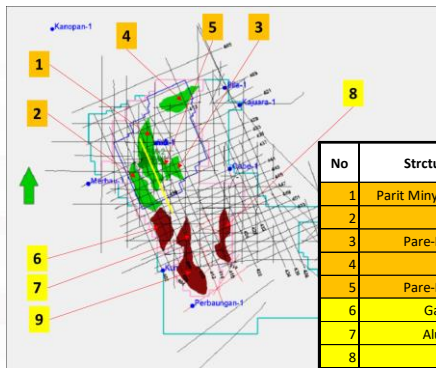
2. REGIONAL GEOLOGY & PETROLEUM SYSTEM

TECTONOSTRATIGRAPHIC CHART - CSB					
M.Y. EP.	Epoch	Formal Period Name	Structural Epochs	Units	Lithology
Pleistocene	Pleistocene	Pleistocene	Pleistocene	Pleistocene	Gravel, Sand and Clay
					Greenish Gray Shale Sandstone and Siltstone
					Brownish Gray, Calcareous Shale and Siltstone
					Medium to Coarse Grained Sandstone and Minor Shale
					Gray, Calcareous Shale With Sandstone Interbeds and Minor Limestone
					Fine to Coarse Grained Sandstone, Conglomerate
					Dark Shale
					Dark Shale
					Dark Shale
					Dark Shale
Miocene	Miocene	Miocene	Miocene	Miocene	Dark Shale
					Dark Shale
					Dark Shale
					Dark Shale
					Dark Shale
					Dark Shale
					Dark Shale
					Dark Shale
					Dark Shale
					Dark Shale
Eocene-Oligocene	Eocene-Oligocene	Eocene-Oligocene	Eocene-Oligocene	Eocene-Oligocene	Dark Shale
					Dark Shale
					Dark Shale
					Dark Shale
					Dark Shale
					Dark Shale
					Dark Shale
					Dark Shale
					Dark Shale
					Dark Shale
Pre-Tertiary	Pre-Tertiary	Pre-Tertiary	Pre-Tertiary	Pre-Tertiary	Dark Shale
					Dark Shale
					Dark Shale
					Dark Shale
					Dark Shale
					Dark Shale
					Dark Shale
					Dark Shale
					Dark Shale
					Dark Shale

- Pematang Formation is known as the main source rocks for hydrocarbon generation in Central Sumatera Basin. This formation contains three (3) units (Heidrick & Aulia, 1993) namely Upper Red Bed, Brown Shale, and Lower Red Bed.
- It is non-marine deposit and formed during Eocene-Oligocene time at the time of extensional tectonics regime.
- The Brown shale unit becomes the main source rock as well as unconventional target.



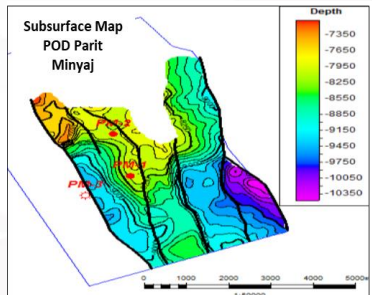
3. DATA AVAILABILITY & PROSPECTIVITY



- 2,000 Km 2D line (old section from PND & company acquisition program in 2002 100 Km)
- 3D Coverage: 350 Km2 (shot in 2001)–last data reprocessing in 2013
- 15 wells with logs and reports, one core in PM-2 well

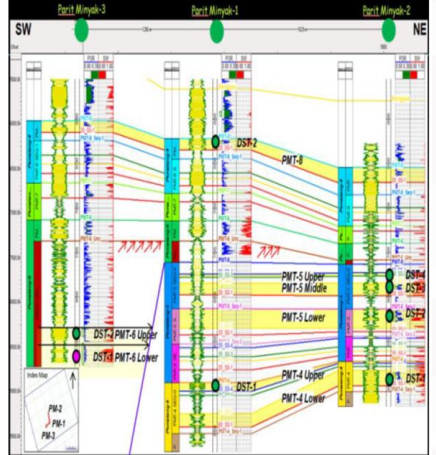
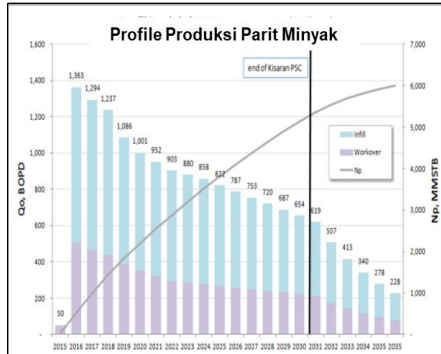
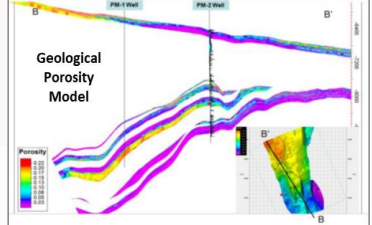
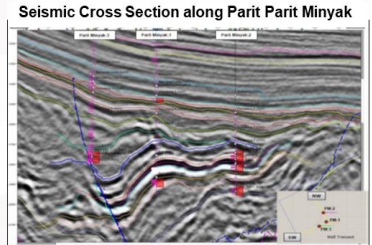
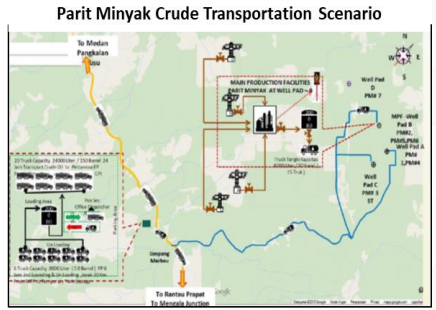
No	Structure	Class	Oil (MMBO)		Gas (BSCF)	
			IP	Rec Res	IP	Rec Res
1	Parit Minyak Upside	Prospect	194,2	50,1	84,3	32,3
2	Belongkot		142,2	36,5	61,2	23,4
3	Pare-Pare Deep		53,4	13,8	23,2	8,8
4	Kualu		120,4	30,9	51,2	19,5
5	Pare-Pare West		36,5	9,4	15,9	6,1
6	Gariangkopi	Lead	207,4	53,3	90,1	34,4
7	Aluran Naga		108,1	27,8	45,2	17,3
8	Nabara		122,5	31,5	56,6	21,6
9	Pangkatan		99,9	25,8	45,3	17,3
TOTAL			890,4	279,1	473	180,7

4. PARIT MINYAK FIELD DEVELOPMENT



- initial production **600 BOPD** and peak production **1400 bopd**
- Oil will produce from wells in the Parit Oil field, and then flow it through a flowline to the Main Production Facilities (MPF) which is located at Pad B. Then transported by trucking to Pertamina EP Pangkalan Susu Field.
- then mixed with Pangkalan Susu Field oil in the Main Gathering Station.
- The provisions for the sale of oil will follow the sales purchase agreement between Pertamina EP Pangkalan Susu Field and the buyer.

Reservoir	OOIP, MMSTB			Reserves (MMSTB)
	P1	P2	Risk	
Pematang	4,51	42,92	25,9	5,99



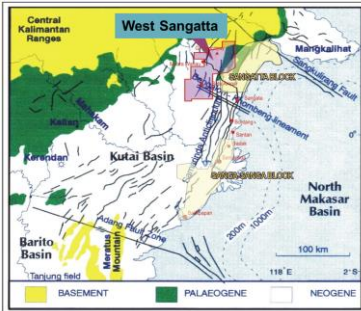
DRO-2 WEST SANGATTA

1. LOCATION



- DRO-6 is located in West Sangatta at East Kalimantan.
- Situated in the northern part of the Kutai Basin, as a prolific basin that produce gas and oil.
- There is 1 well discovery, Tengkawang-1 as a gas condensate discovery with oil shows.
- Subsurface discoveries:
 - oil: OOIP 450 MMBO
 - gas: OGIP 200 BCF
 - Non Konv: under explored

2. REGIONAL GEOLOGY & PETROLEUM SYSTEM

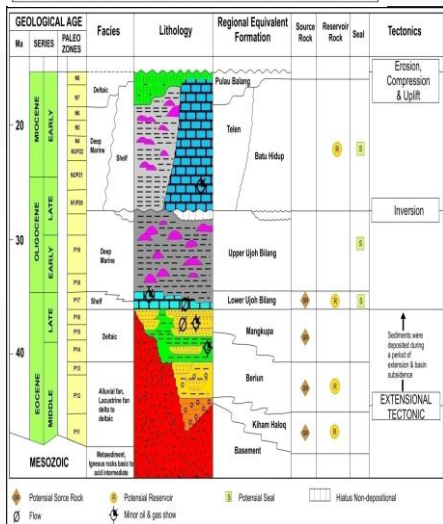


The West Sangatta Block:

Situated in the northern part of the Kutai Basin (the most prolific basin in Indonesia).

The Kutai basin bounded by:

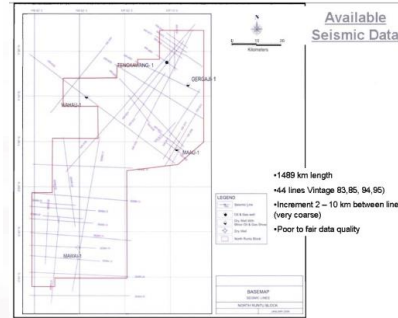
- The Kuching High in the west
- The Sangkulirang High in the north
- The Paternoster High in the south
- Open to the Makassar Strait in the east.



- Teritary deposition in Kutai Basin occured in two different phases.
- The first pased occured during the Eocene-Oligocene period with the filling of thick siliciclastic sequences, most of which were shale deposited in the bathyal environment.
- The second phase of deposition in the Kutai Basin consists of a broad series of alluvial and deltaic deposits that prograded from west to east starting in the Early Miocene. (Ott, 1987).

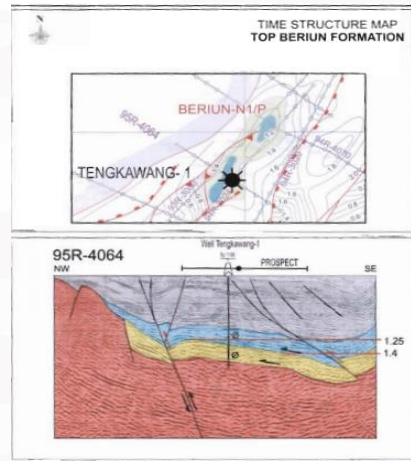
Petroleum System	MESOZOIC			CENOZOIC						ERA PERIOD
	Triassic	Jurassic	Cretaceous	Tertiary						
Source Rock				Palaeocene	Eocene	Oligocene	Miocene	Pliocene	Quaternary	
Source Rock				LU/Blah shale						
Reservoir				Beriuu clastic			LU/Blah carbonate and clastic			
Seal				Deltaic			Regional shale LU/Blah			
HC Generation and Migration				Beriuu claystone						
Final Tectonism and Structure Generation				LU/Blah shale						

3. DATA AVAILABILITY



- 1489 km length of 2D Seismic Data
- 44 lines Vintage 83, 85, 94, 95
- Increment 2-10 km between lines (very sparse)
- Poor to fair data quality
- There are 5 wells (Tengkawang-1 O&C Discovery with oil Show, Maau-1 and Wahau-1 P&A as gas and oil shows), Meranti-1 and Keruing-1 Permanent P&A.

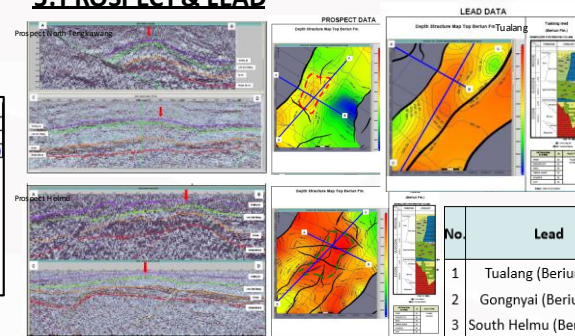
4. DISCOVERY (Tengkawang-1)



Play Elements

- Trap : Faulted anticline
- Reservoir : Deltaic sandstones of the Beriuu Fm
- Seal : Regional Seal of U. Ujoh Bilang Fm and International seal of L. Ujoh Bilang Fm
- Source : Lacustrine shales and deltaic coals of Beriuu Fm
- Maturity : Mature
- Water Depth : -
- Reservoir Depth : 5767 feet (1758 m)
- Risk
 - Source : 83%
 - Reservoir : 71%
 - Trap : 61%
 - Timing - Migration : 71%
 - Prob of Success : 25.16% / Low Risk (Otis & Schneidermann, 1997)
 - Critical Issue : Trap Integrity
- Assessment
 - Most Likely Area : 8069 acres
 - Assured Relief : 1021 feet
 - Gas Field (P50) : 1582.19 BSCF (POS x Reserve = 398.09 BSCF)
 - Oil Field : 563.57 MMBO (POS x Reserve = 141.80 MMBO)

5. PROSPECT & LEAD

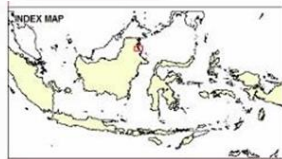
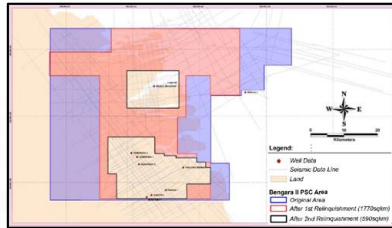


No.	Prospect	Resources (IP)			Resource (RR)			Location*
		MMBO	BCFG	MMBC	MMBO	BCFG	MMBC	
1	North Tengkawang (Beriuu Fm.)	100	-	-	25	-	-	Onshore
2	Helmu (Beriuu Fm.)	128	-	-	32	-	-	Onshore
3	Jala (Beriuu Fm.)	72	-	-	18	-	-	Onshore

No.	Lead	Resources (IP)			Resource (RR)			Location*
		MMBO	BCFG	MMBC	MMBO	BCFG	MMBC	
1	Tualang (Beriuu Fm.)	132	-	-	33	-	-	Onshore
2	Gongnyai (Beriuu Fm.)	180	-	-	45	-	-	Onshore
3	South Helmu (Beriuu Fm.)	40	-	-	10	-	-	Onshore

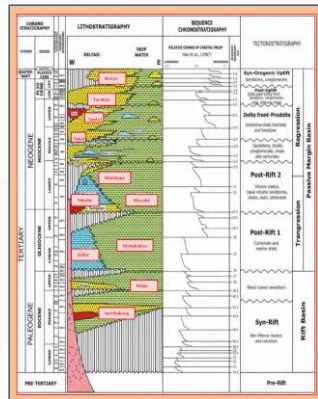
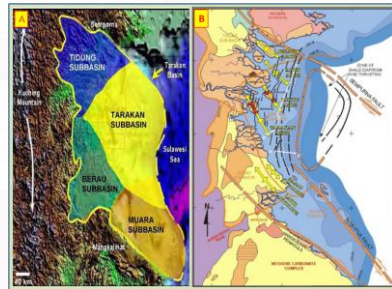
DRO-3 BENGARA II

1. LOCATION

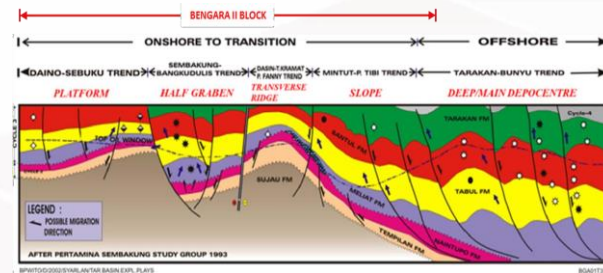


- DRO Bengara II is located in Onshore Kalimantan (Borneo), part of Great Tarakan Basin, North-Eastern part of Kalimantan Island.
- The main objectives are sand reservoirs from Late Oligocene to Pliocene, there is also carbonate reservoirs as exploration target from Early Miocene age.
- Estimated Recoverable Resources for all reservoir targets within this block is 66 MMBOE for oil & gas (based on evaluation from previous operator).
- There are 2 discoveries within DRO Bengara II, Muara Makapan (sandstone from Tarakan Fm.) & Seberaba (sandstone from Naintupo Fm.).

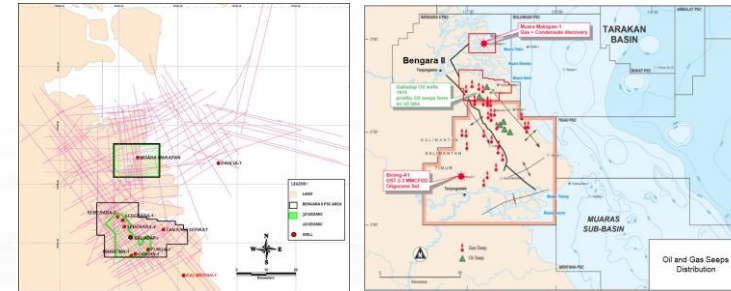
2. REGIONAL GEOLOGY & PETROLEUM SYSTEM



- Tarakan basin is one of the oldest explored hydrocarbon basin, since its first discovery in 1899.
- Based on TOC, source rock in Tarakan Basin comes from Eocene (Sembakung Fm.) to Middle Miocene (Tabul Fm.).
- In terms of reservoirs, Tarakan Basin have both sandstone & carbonate reservoir, which already proven as hydrocarbon fields.
- Trap system can be both structural and stratigraphic, since this area is considered as deltaic environment.
- Migration system can be both lateral and vertical through fault.



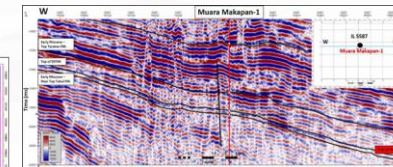
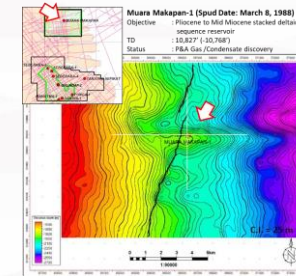
3. DATA AVAILABILITY & INFRASTRUCTURE



- This area is covered by 2D seismic (1976-1991), and 3D seismic (2007 & 2020)
- Several exploration wells were drilled in this area, since early 19th until 2016.

4. DISCOVERY

Muara Makapan

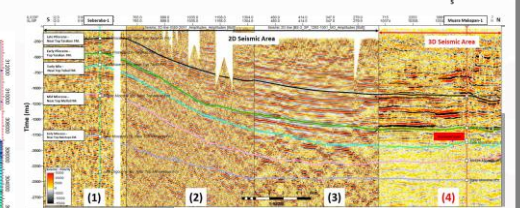
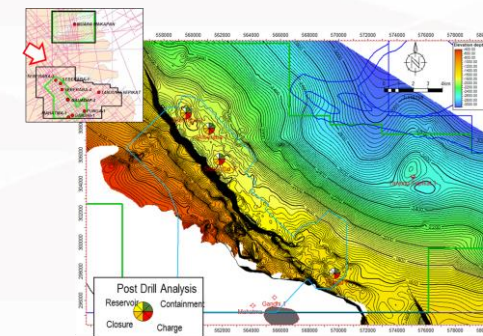


Struktur Muara Makapan	Initial Gas In Place (BSCF)	Gas Reserve *) (BSCF)
1P	1.12	0.95
2P	9.69	8.24
3P	20.34	17.29

*) Non - Associated Gas

- DST#4 1897-1909.5m (netpay thickness: 10.1m), Final Flow Period on 7/8" chh: 19 MMSCF/D Gas, & 600 BC/D Condensate)
- This reserves already certified by Lemigas in 2019 (2P RR, 8.24 BCSF).

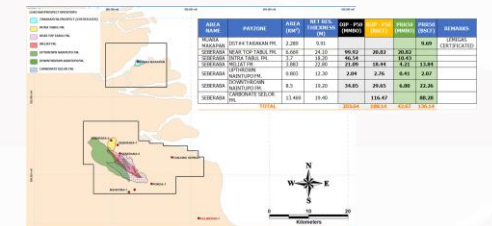
Seberaba



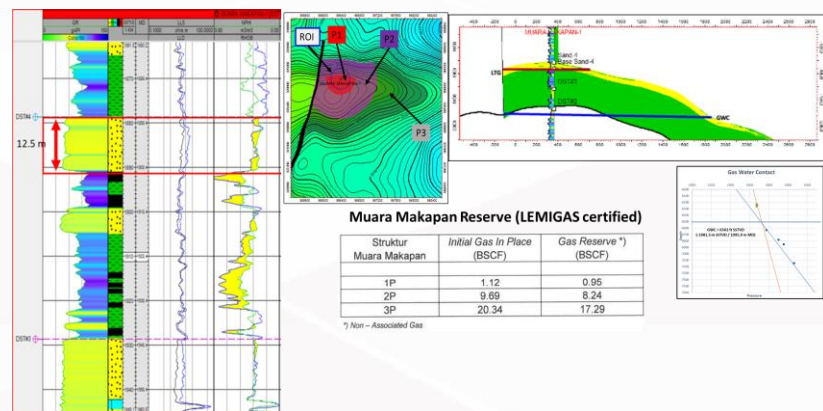
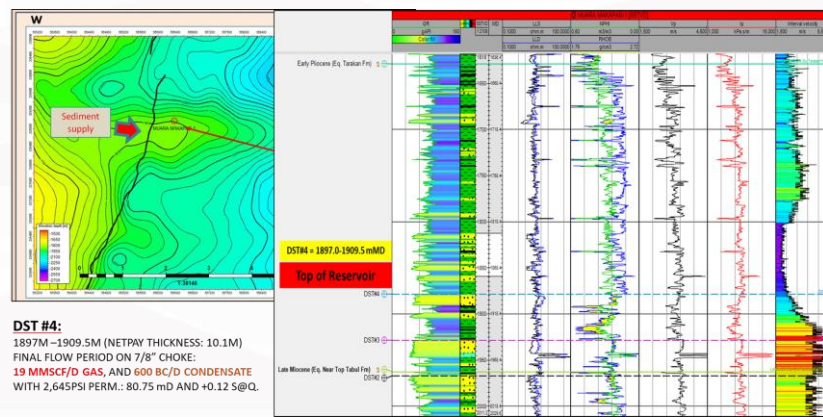
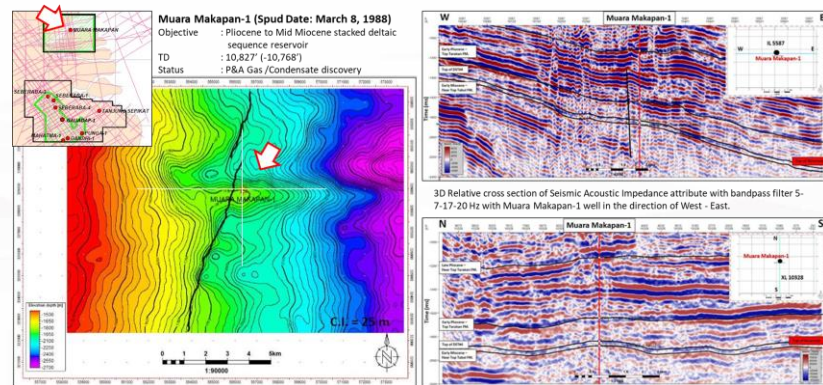
- DST#3 from Seberaba-1 in Sandstone Naintupo Fm., flowing oil & gas with oil rate estimated 16 BOPD (36 deg API)

5. PROSPECT & LEAD

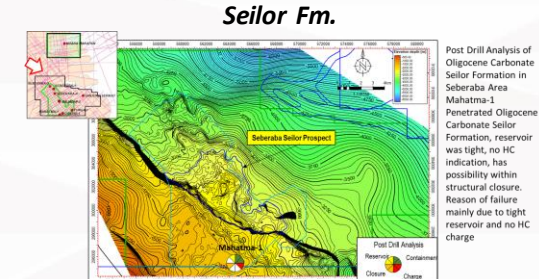
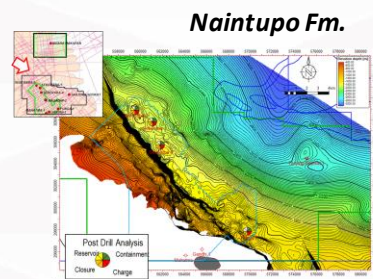
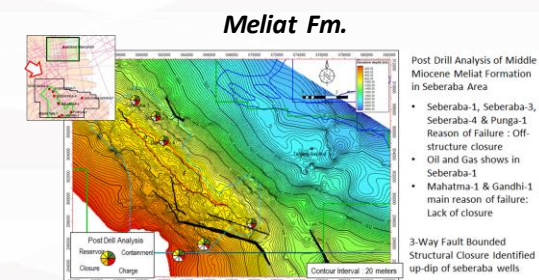
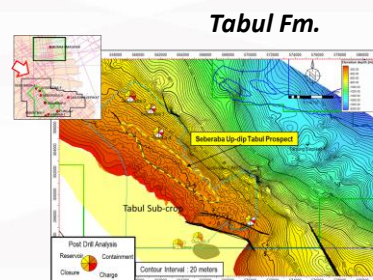
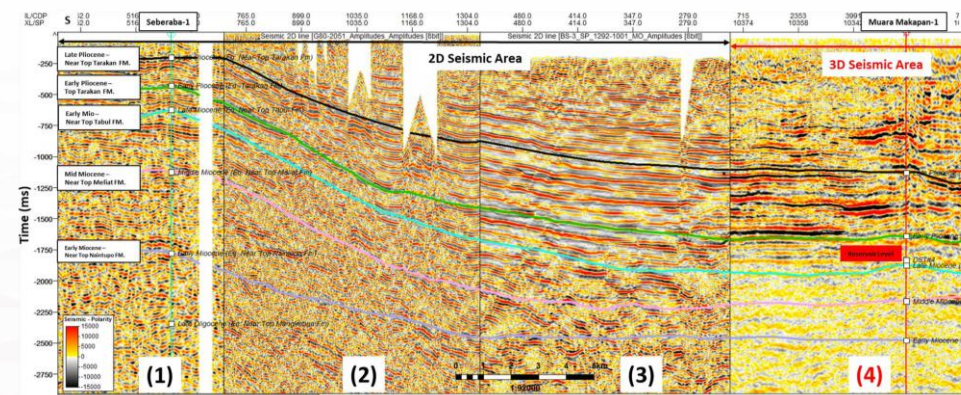
There are 2 discovery prospects with estimated recoverable resources is 42 MMBO for oil & 136 BCFG for gas. Muara Makapan has only 1 reservoir target, while Seberaba has multiple reservoir target from Oligocene to Middle Miocene.



Northern Block

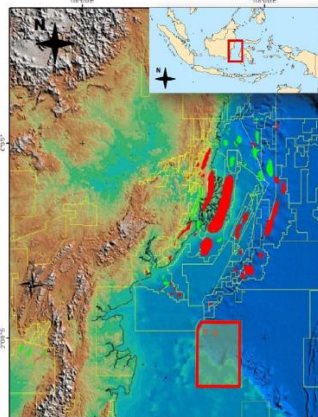


Southern Block



DRO-4 BALA BALAKANG

1. LOCATION

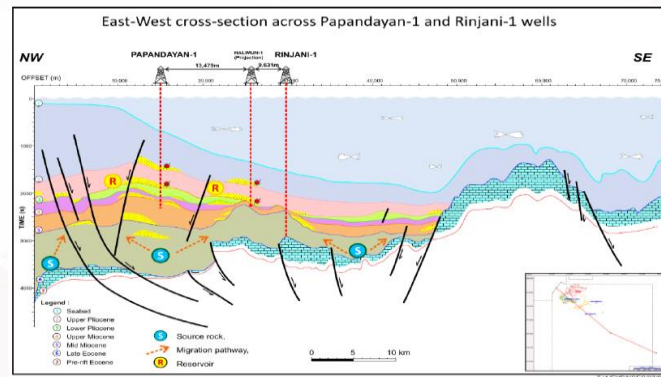
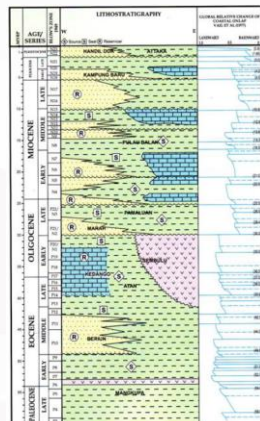


- DRO Bengara II is located in Offshore Kalimantan (Borneo), part of Kutai Basin, South-Eastern part of Kalimantan Island.
- The main objective is Plio-Pleistocene sandstone reservoirs which already proven in Jangkrik, Mekares & Gendalo to the North. Secondary objective is Upper Miocene sandstone reservoir which also already proven in Gendalo & Jangkrik to the North.
- Estimated Recoverable Resources within this block is around 6 TCF (evaluation from previous operator).
- There are 2 wells that have proven the presence of gas from MDT sample in Plio-Pleistocene reservoir, Halimun-1 & Papandayan-1.

2. REGIONAL GEOLOGY & PETROLEUM SYSTEM



- Kutai basin is one of the biggest hydrocarbon production basin in Indonesia.
- Based on previous evaluation, there are 2 petroleum system mechanism for gas in this area, Biogenic System & Thermogenic System.
- Main objective in this area is Plio-Pleistocene sandstone reservoir, secondary objective is Upper Miocene sandstone reservoir, which already become proven reservoir in several fields near by.
- Stratigraphic trap is dominant compare to structural trap.
- Migration mechanism can be both, vertically and laterally.



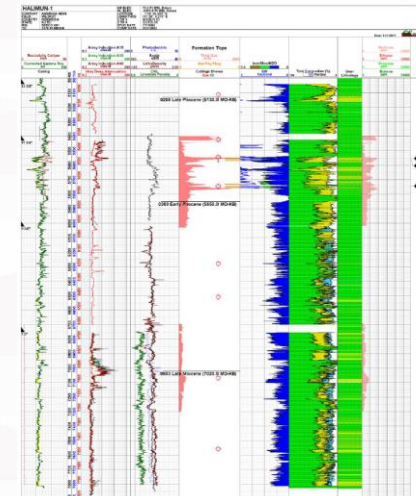
3. DATA AVAILABILITY & INFRASTRUCTURE



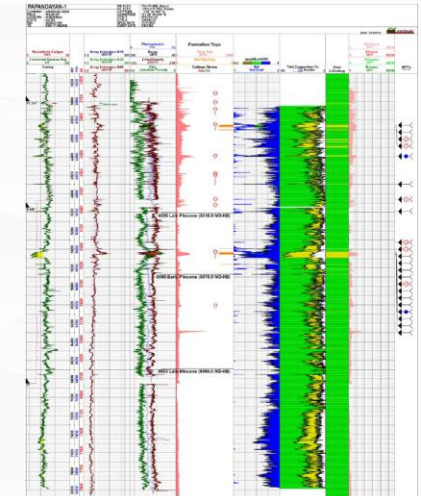
- This area is covered by 2D seismic (1971-2002), D-series which has poor quality, and TARU02 which has better quality (poor to fair).
- There are 2 packages of 3D seismic, Multiclient 3D data which are acquired by PGS and 2014 3D seismic acquired by Krisenergy.
- At least 3 most recent exploration wells drilled within 2002-2005, Halimun-1 & Papandayan-1 (drilled by Amerada Hess, Petronas & Pertamina) also Rinjani-1 (drilled by Amerada Hess & Unocal).

4. "DISCOVERY" WELLS

Halimun-1 (2002)



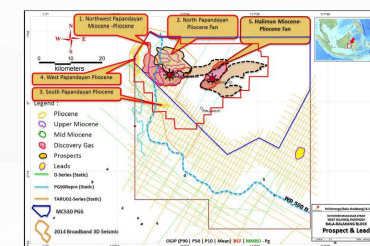
Papandayan-1 (2002)



- MDT confirm presence of gas (biogenic) from Pliocene sandstone reservoir. 1590 unit gas peak while drilling.

- MDT confirm biogenic gas from Pliocene sandstone reservoir. 497 unit gas peak while drilling.

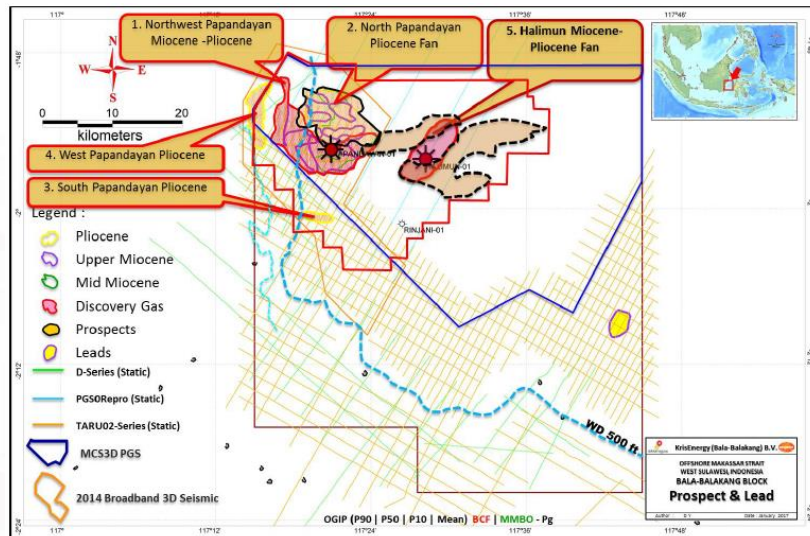
5. PROSPECT & LEAD



- MDT also confirm biogenic gas from Pleistocene sandstone reservoir.

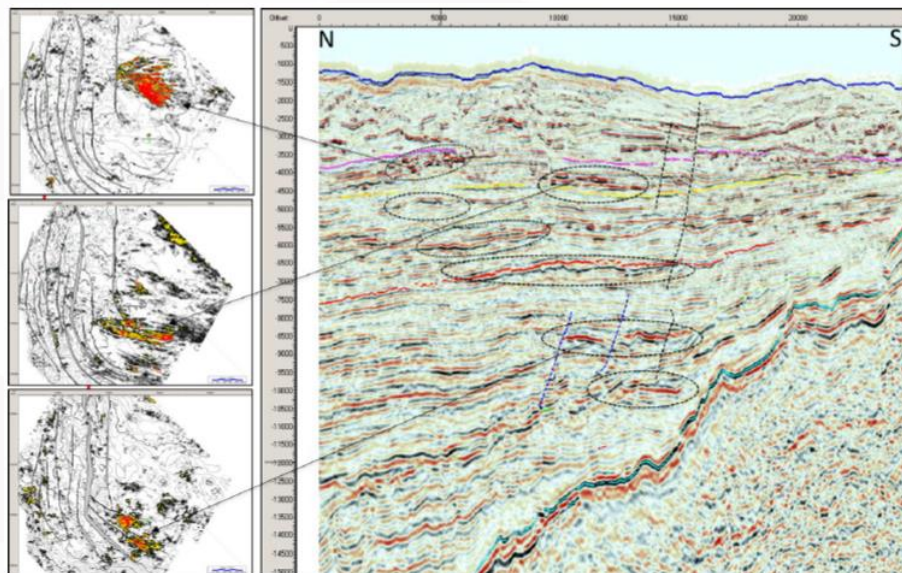
From previous evaluation, there are 6 prospects which have multiple reservoir target, Middle Miocene, Upper Miocene, and Plio-Pleistocene. Total recoverable resources estimation (P50) from 6 prospects is around 6 TCF.

DRO-4 BALA BALAKANG

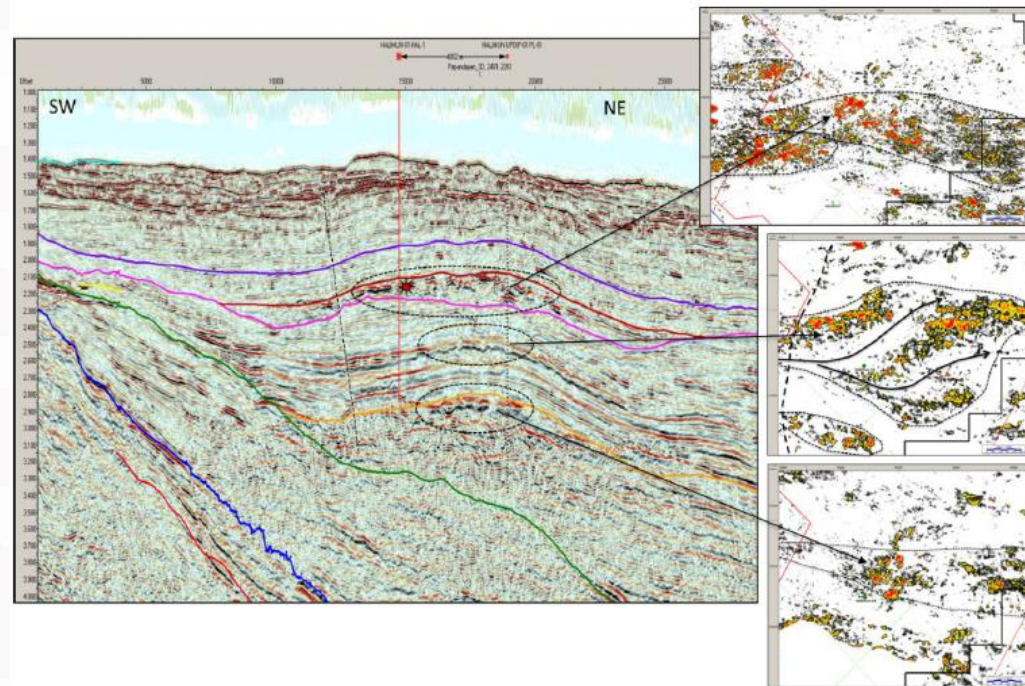


Prospect	Lobe Fan	Gas In-Place (BCF)				Resources (BCF)				Pg (%)
		P90	P50	P10	Mean	P90	P50	P10	Mean	
1. Northwest (NW) Papandayan	PP-UM-MM	1,315	3,166	7,448	3,924	846	2,074	4,902	2,569	24%
2. North Papandayan	PP-UM-MM	1,137	2,445	4,846	2,781	7,32	1,600	3,197	1,824	21%
3. South Papandayan	PP	38	107	285	140	25	71	187	92	20%
4. West Papandayan	PP*	183	435	936	510	117	284	619	335	22%
5. Halimun	P-UM-MM	1,146	2,944	7,155	3,690	737	1,928	4,707	2,419	24%
6. East Pliocene	P	61	131	273	153	40	86	179	101	14%
TOTAL Bala-Balakang PSC (BCFG)		3,880	9,228	20,943	11,198	2,497	6,043	13,791	7,340	

Papandayan Complex

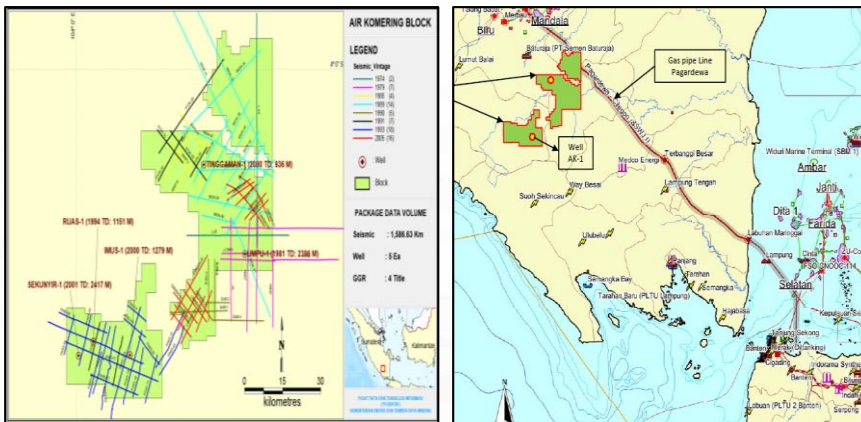


Halimun Complex



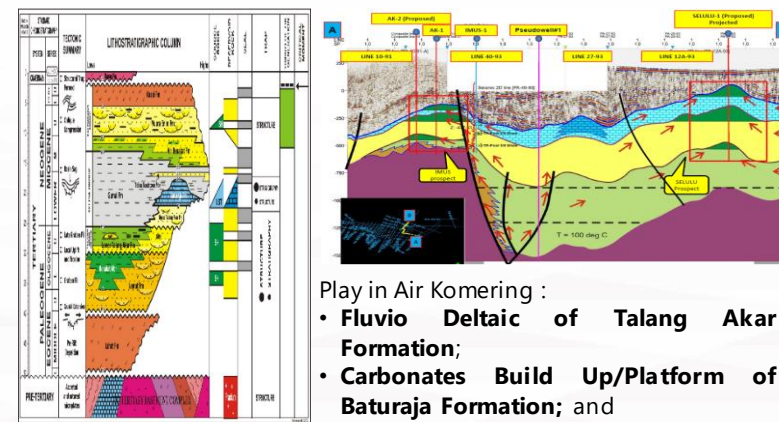
DRO-5 AIR KOMERING

1. LOCATION & DATA AVAILABILITY



- DRO 3 is located in the South Sumatra Basin, onshore of South Sumatra and Lampung Province.
- It is close to the Sumatra-Java Pipeline Facility.
- Contain 1 Discoveries:
 - AK-1 : 8,7 MMSCFPD (2 interval test in UTAF)

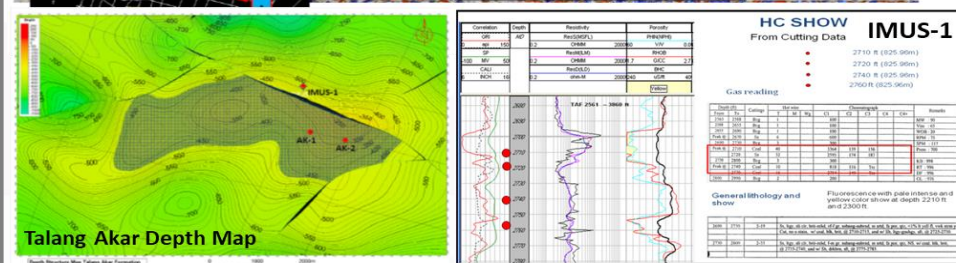
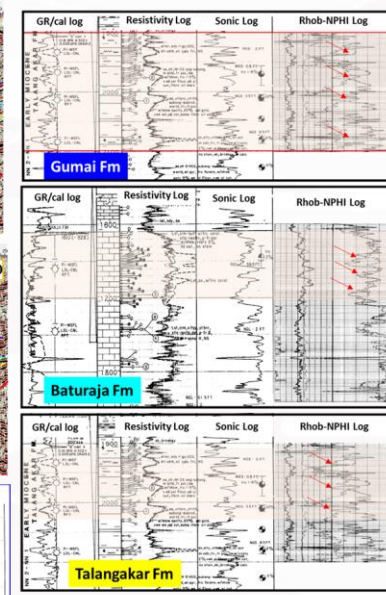
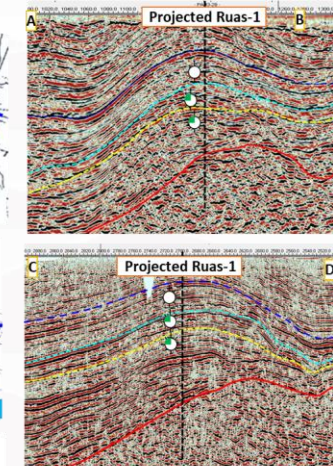
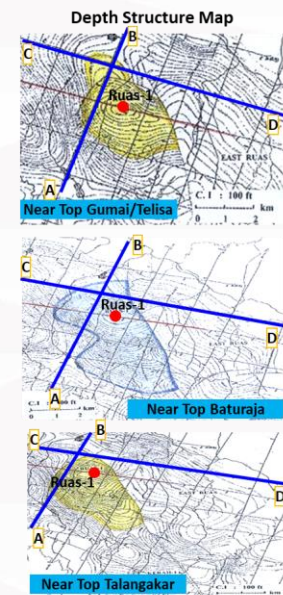
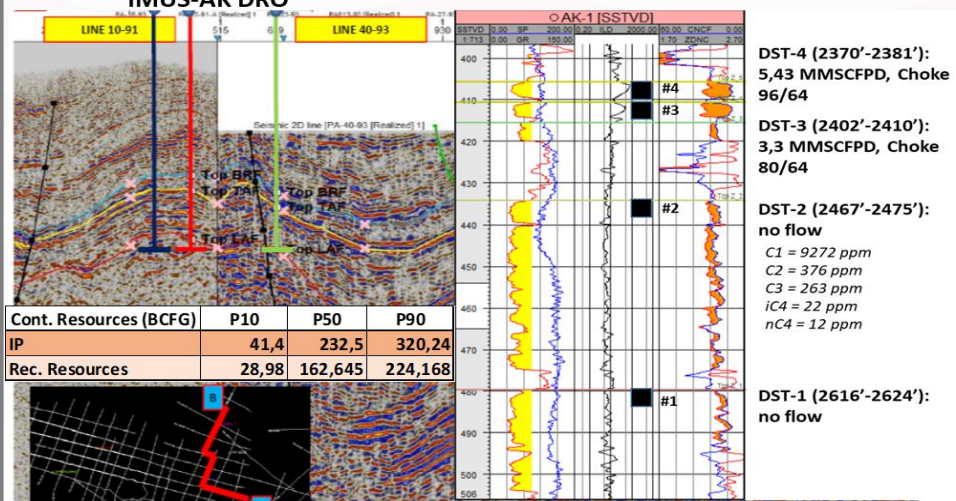
2. REGIONAL GEOLOGY & PETROLEUM SYSTEM



- Play in Air Komering :
- Fluvio Deltaic of Talang Akar Formation;
 - Carbonates Build Up/Platform of Baturaja Formation; and
 - Basement Fracture (as Potential Play).

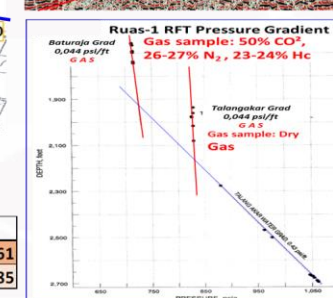
3. DISCOVERY

IMUS-AK DRO



RUAS GAS GEOLOGIC DISCOVERY

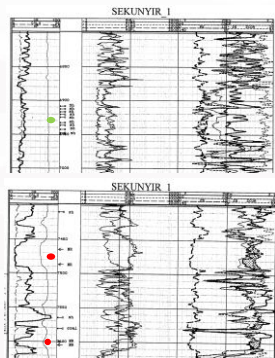
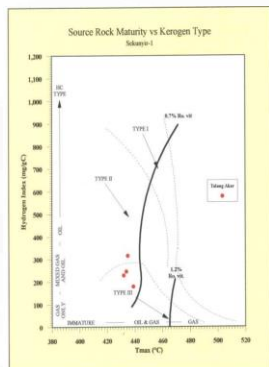
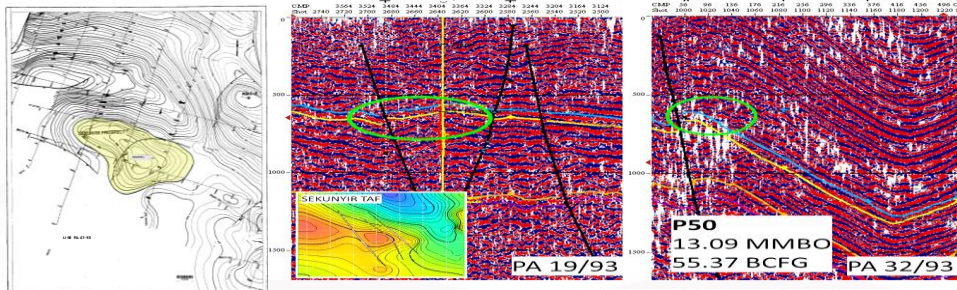
RESOURCES (BCFG)	P50
IP	561
Rec. Resources (clean)	235,85



No DST due to High CO² in Baturaja Fm, and uneconomic prediction

DRO-5 AIR KOMERING

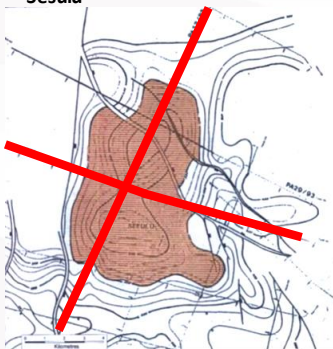
Sekunyir



ZONE #	1	2	3	4	5	6
Formation Name	BRF	U TA	LA	LEMAT	BSMT	
FROM	FT 3107.33	4118.603	4308.895	5244.319	7308.119	7451.115
TO	FT 4118.333	4308.423	5244.319	7307.661	7460.657	7517.458
INTERVAL	FT 1011.003	189.821	935.424	2062.869	152.538	56.343
PHI Cut Off	0.09	0.09	0.09	0.09	0.09	0.09
SW Cut Off	0.65	0.65	0.65	0.65	0.65	0.65
WV Cut Off	0.3	0.3	0.3	0.3	0.3	0.3
Net Pay Interval	FT 12.71	0	0.942	237.545	10.076	0
Gross Interval	FT 75.328	11.283	51.576	746.198	73.292	0
Net Pay/Gross	0.169	0	0.018	0.316	0.138	0
Net Pay/Gross Interval	0.015	0	0.001	0.114	0.066	0
Average SWI	% 29.494	0	21.654	19.036	10.526	0
Average SWI	% 59.267	0	59.084	55.258	43.131	0
Average Vshaly	% 0.099	0	10.815	2.484	0	0
Integrated PHI	FT 3.137	0	0.204	45.216	1.061	0
Weighted Sum PHIT(SW)	FT 0	0	0	0	0	0
Average Sum PHIT(SW)	FT 1.528	0	0.084	21.247	0.6	0

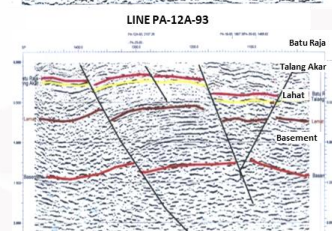
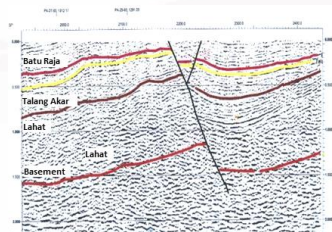
- No DST
- Oil and Gas Shows in Lower Talang Akar
- High Total Gas in Telisa and Talang Akar
- Talang Akar Poor-Fair Source of gas Maturity
- Excellent Source Rock Quality
- Oil Windows 0,7% Ro value in 7000 ft

Sesulu

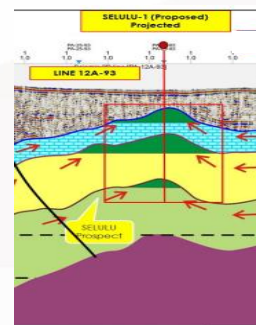


TIME STRUKTUR MAP BATURAJA FORMATION

PETROLEUM SYSTEM	%	PLAY TYPE
TRAP	60	
RESERVOIR	70	Batu Raja
SEAL	60	Limestone
TIMING & MIG	70	
SOURCE	90	
GCF	15.9	

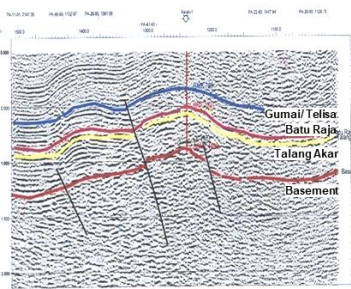
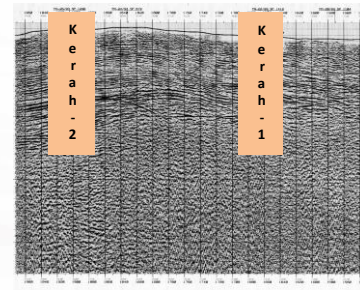
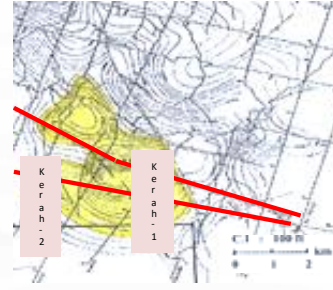


- Prospect based on AK-1, Ruas-1, and Imus-1 Well
- Primary Target is Baturaja Fm. Possibly reefal

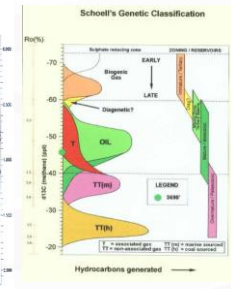


LINE PA-25-93

Kerah



LINE PA-47-93



ZONE	1	2	3	4	5	6	7	8	9	10	11	12	13
Sample Name													
FROM	FT 3465.255	3754.207	3774.071	4017.3	4151.453	4223.402	4451.488	4762.052	4883.055				
TO	FT 3698.254	3768.206	3788.066	4153.420	4223.402	4293.446	4483.488	4803.530					
INTERVAL	FT 232.999	94.000	114.000	142.000	72.000	72.000	332.000	320.000					
PHI Cut Off	0.0	0.0	0.0	0.0	0.0	0.0	0.0	0.0					
SW Cut Off	0.0	0.0	0.0	0.0	0.0	0.0	0.0	0.0					
WV Cut Off	0.0	0.0	0.0	0.0	0.0	0.0	0.0	0.0					
Net Pay Interval	FT 4.1	0	0	0	0	0	0	0					
Gross Interval	FT 1.0	0	0	0	0	0	0	0					
Net Pay/Gross	0.520	0.000	0.000	0.000	0.000	0.000	0.000	0.000					
Average SWI	% 0.000	0.000	0.000	0.000	0.000	0.000	0.000	0.000					
Average Vshaly	% 0.000	0.000	0.000	0.000	0.000	0.000	0.000	0.000					
Integrated PHI	FT 0.000	0.000	0.000	0.000	0.000	0.000	0.000	0.000					
Weighted Sum PHIT(SW)	FT 0.000	0.000	0.000	0.000	0.000	0.000	0.000	0.000					
Average Sum PHIT(SW)	FT 0.000	0.000	0.000	0.000	0.000	0.000	0.000	0.000					

- No DST, only SWC
- Oil and Gas Shows in Telisa, BRF, & TAF
- Kerah Post Drill Res Pmean 33,18 BSCF & 24,69 MMBO

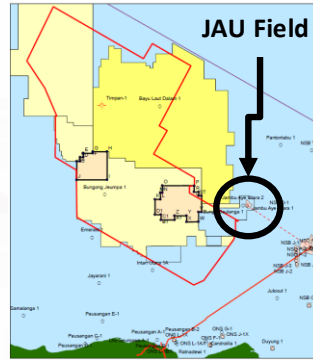
Other Prospek and Lead

Status	Nama Struktur	OOIP (MMBO)	GIIP (BSCF)	IHIIIP (MMBOE)	Formasi
Lead	Kebun Sahang	28,73	23,21	32,73172	TAF/BRF
Lead	Way Balak	7,26	5,87	8,272069	TAF/BRF
Lead	East Way Balak	40,4	32,64	46,02759	TAF
Lead	Waicacahan	24,3	19,63	27,68448	TAF
Lead	Sungai Pisang 108	15,08	12,19	17,18172	TAF
Lead	North Punai	15,08	12,19	17,18172	TAF
Lead	South Waicacahan	12,12	9,79	13,80793	TAF
Lead	West Kebun Sahang	11,61	9,38	13,22724	TAF
Lead	West Waicacahan	4,97	4,01	5,661379	TAF
Lead	Kota Negara	4,57	3,69	5,206207	TAF
Lead	Punai	13,38	10,81	15,24379	BRF
Lead	Sukabanjar	N/A	N/A	N/A	BRF
Lead	East Ruas	N/A	N/A	N/A	BRF
Lead	Tuba	N/A	N/A	N/A	BRF
Lead	Negara Agung	N/A	N/A	N/A	BRF
Lead	Sugih Waras	N/A	N/A	N/A	BRF
Lead	Tiding	N/A	N/A	N/A	BRF

- 1 Discovery (AK-1), 4 Technical/Uneconomic Discovery (Ruas-1, Kerah-1, Sekunyir-1, Imus-1), 1 Prospect, and 11 Lead.
- Most Gas Discovery in Baturaja Formation contained High CO2 (up to 89%). It is different with Gas and Oil in Talang Akar Formation which contained low CO2 (around 2%)
- Main Risk of the area is maturity, in some area Lower TAF are mostly mature
- The area need more data seismic, since the seismic vintage is 1993
- Imus-1, Ruas-1, and Kerah-1 are discoveries on SWC.
- In Sekunyir-1 and Kerah-1 Wells, there are also shows hydrocarbon in Telisa Formation.
- Total Prospective Resources 325 MMBOE.

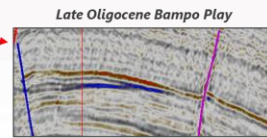
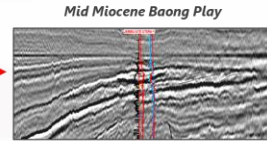
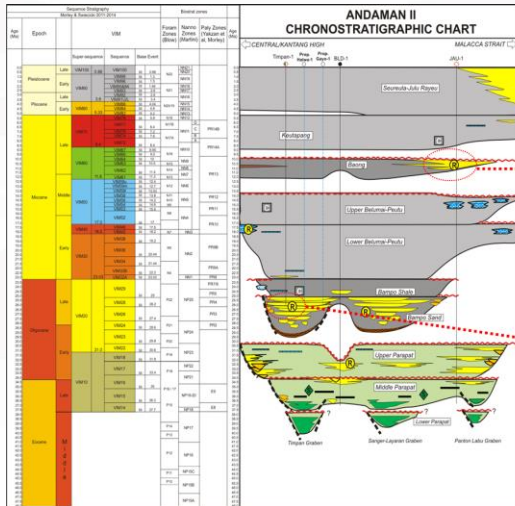
DRO-6 JAMBU AYE UTARA

1. LOCATION



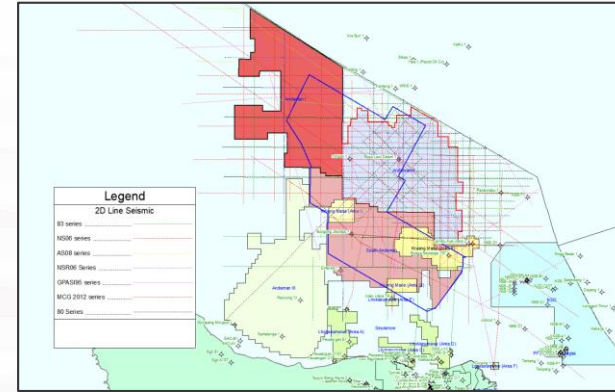
- DRO-6 is located in Offshore North Sumatra Basin.
- DRO-6 Jambu Aye Utara (JAU) was belong to Krueng Mane PSC before it's total relinquishment.
- POD of JAU Approval : 22 Desember 2011, with Total Reserve : **163.2 BCFG & 3.4 MMSTB** (condensate).

2. REGIONAL GEOLOGY & PETROLEUM SYSTEM



- Parapat & Bampo Fm. is known as the main source rocks for hydrocarbon generation in North Sumatra Basin, for some deep area Baong Fm. is considered as source rock also.
- Main reservoir for JAU Field is sandstone from Baong Formation as draped over structure over regional high.
- Since the recent discovery of Timpan & Layaran in North Sumatra Basin, it is open the opportunity to explore such a new play for clastic play in Bampo Fm.

3. DATA AVAILABILITY & EXPLORATION HISTORY



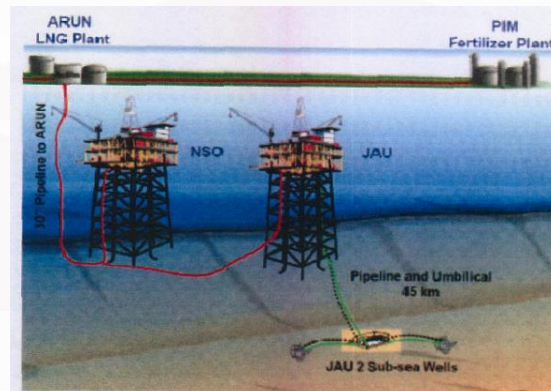
Here is an exploration history regarding Krueng Mane Area:

- 1982-1996: INPEX's North Aceh Offshore (NAO) PSC acquired
 - 13,745km seismic data,
 - Drilled 5 exploration wells (SML-1, JAU-1, PLB-1, GPM-1, JAU-2)
 - After a 5 year break in exploration activity (1989-1994), INPEX farmed down a 50% PI to Mobil.
 - An additional 1500km of seismic data
 - Drilled 2 exploration wells (ITU-1 and BLD-1)

- JAU Field is covered by multivintage 2D seismic data from 80's to 2012.
- But there are 3D seismic data around this area, including 2018 multiclient 3D seismic data.
- JAU Field consist of 2 exploration wells, but there are another 7 exploration wells around this area which was drilled from 80's to 2009.

- The NAO PSC was relinquished on 10th December 1996
- Krueng Mane PSC awarded to LASMO 27th September 1999
 - UNOCAL farmed-in for 15% PI in late 2000
 - Drilled 1 exploration well in 2001 (BJM-1, formerly known as the Topaz prospect)
 - After drilling the well, UNOCAL relinquished its equity. ENI now holds 100%
 - KOGAS farmed in and took 15%
 - Drilled 1 exploration well (BSN-1 in 2009)

4. JAU FIELD DEVELOPMENT SCENARIO



- Operator will drill 2 vertical development well, and will be completed as single zone completion.
- These 2 wells will be connected to a new production facility (45 km) that will be built by operator near NSO A Field existing facility.
- After hydrocarbon is processed in the new facility, it will be tied in to existing pipeline which is connected to the onshore existing facility (105 km to Arun LNG).

THANK YOU